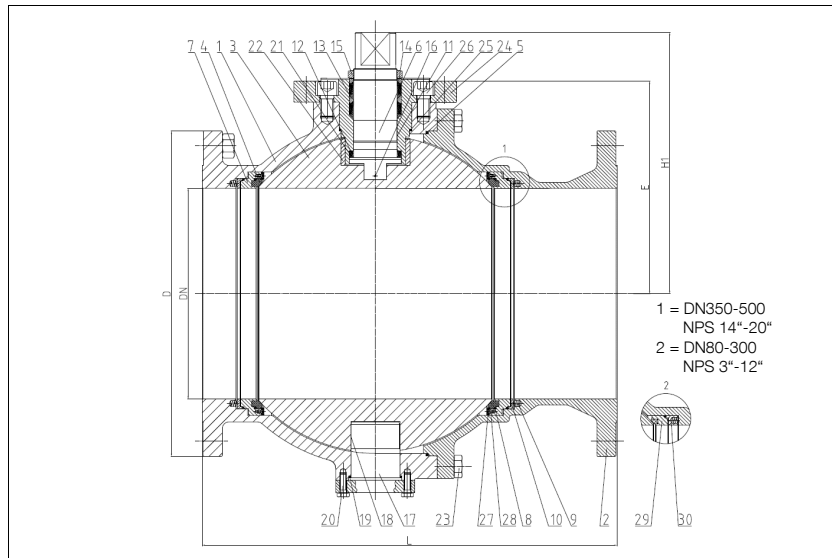


# BALL VALVES INTEC

**K210, 12" - 20", Class 150/300**  
**trunnion mounted ball, soft seated,**  
**both sides spring loaded seat rings**



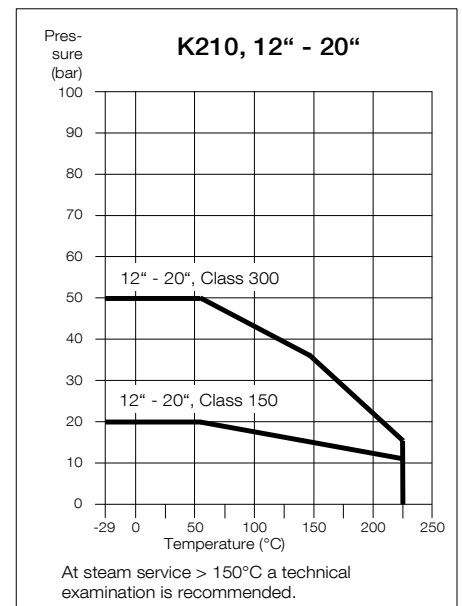
**Flanged ball valve**  
**full bore**  
**face to face acc. to ANSI B 16.10**  
**flanges acc. to ANSI B 16.5**

**Specification:**

Two-piece ball valve, flanges acc. to ANSI B 16.5, face to face dimensions acc. to ANSI B 16.10, full bore, blow-out-proof stem, body material stainless steel (ASTM A351-CF8M) or carbon steel (ASTM A216-WCB), antistatic device, free of non ferrous metals, trunnion mounted ball, seats full chambered, stem packing graphite/KFGN/KFAM cone ring system dynamic loaded adjustable, top flange DIN EN ISO 5211, approved by PED, certified acc. to GERMAN clean air act VDI 2440, Fire-Safe acc. to API 607 and DIN EN ISO 10497.

Marking: INTEC K210

No.	Part	Material	Material
<b>Standard design</b>			
1	body	ASTM A216-WCB	ASTM A351-CF8M
2	cap	ASTM A216-WCB	ASTM A351-CF8M
3	ball	1.4408 (ASTM A351-CF8M)	
4	seat	KFM	
5	body seal	KF	
6	stem	1.4462 (A479 UNS S31803)	
7	seat bearing ring	1.4571 (AISI 316 Ti)/1.4404 (AISI 316 L)	
8	bearing ring seal	KF	
9	spiral spring	1.4401 (AISI 316)	
10	follower ring	1.4571 (AISI 316 Ti)/1.4404 (AISI 316 L)	
11	stem bearing	1.4401 (AISI 316)/KF	
12	below seal	KFGN/Graphite	
13	upper seal	KFAM/Graphite	
14	bearing	PEEK	
15	hex. nut self-locking	A2/1.4301 (AISI 304)	
16	antistatic element	1.4401 (AISI 316)/1.4571 (AISI 316 Ti)/1.4404 (AISI 316 L)	
17	trunnion	1.4571 (AISI 316 Ti)/1.4404 (AISI 316 L)	
18	bearing	1.4401 (AISI 316)/KF	
19	trunnion seal	KF	
20	hex. screw	A4-70 (A193-B8M)	
21	friction washer	PEEK	
22	ball bearing	PEEK	
23	hex. screw	A4-70 (A193-B8M)	
24	stuffing box	1.4571 (AISI 316 Ti)/1.4404 (AISI 316 L)	
25	stuffing box seal	KF	
26	allen screw	A4-70 (A193-B8M)	
27	stop plate	1.4571 (AISI 316 Ti)/1.4404 (AISI 316 L)	
28	countersunk screw	A4-70 (A193-B8M)	
29	seat bearing ring	1.4571 (AISI 316 Ti)/1.4404 (AISI 316 L)	
30	spring ring	1.4571 (AISI 316 Ti)/1.4404 (AISI 316 L)	
<b>Fire-Safe design</b>			
5	combined body seal	KF-Graphite	
8	bearing ring seal	Graphite	
9	spiral spring	Inconel X750	
11	Fire-Safe seal	Graphite	
	ring	1.4571	
	thrust washer	PEEK	
19	trunnion seal	Graphite	
25	stuffing box seal	KF-Graphite	



**Ordering example:**  
**INTEC K210, 20", Class 300,**  
**CF8M, Fire-Safe**

\* Necessary torque measured with treated water at Δ P acc. to pressure class and room temperature

\*\* gearbox recommended

**Dimensions**

NPS inch	dimensions (mm)				E	H1	top flange ISO	torque Nm *		ca. weight kg	
	L 150lbs.	L 300 lbs.	D 150 lbs.	D 300 lbs.				150 lbs.	300 lbs.	150 lbs.	300 lbs.
12"	610	648	485	520	311	400	F16/F25	1642**	3921**	385	445
14"	686	762	535	585	350	439	F25	2420**	5820**	530	640
16"	762	838	595	650	389	477.5	F25-F35	3110**	7510**	715	870
20"	914	911	700	775	485	589	F25-F35	6020**	14770**	1365	1500